

# National Programmes Day

## The role of the Office of the Nursing & Midwifery Services Director

**Sláintecare.**

Right Care. Right Place. Right Time.



# HSE Nursing and Midwifery Staff Census

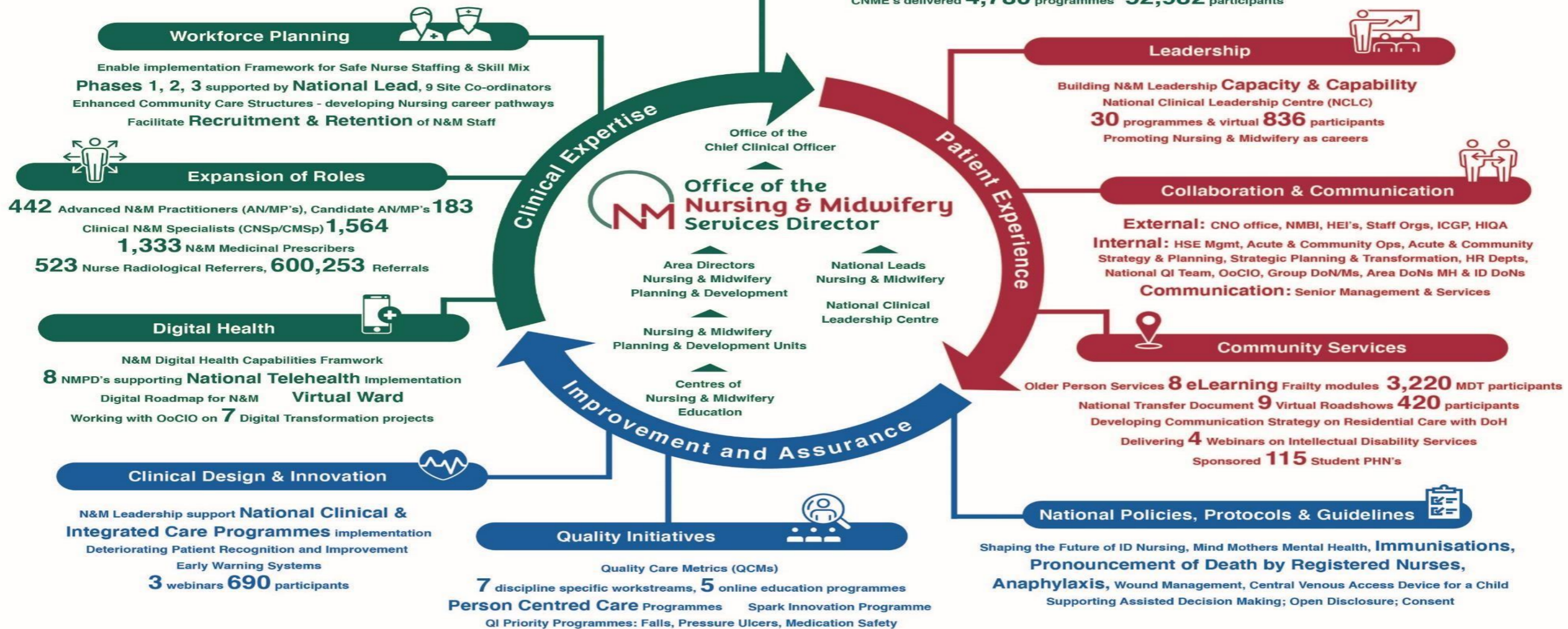
78,000 **nurses** and midwives registered to practice in Irl (NMBI)

## HSE staff

- 40,746 WTE Nurses & Midwives employed in public health service
- 39,703 WTE Total Nurses & Midwives (excluding students & others)
- 32% Workforce (HSE Staff Census - February 2021)



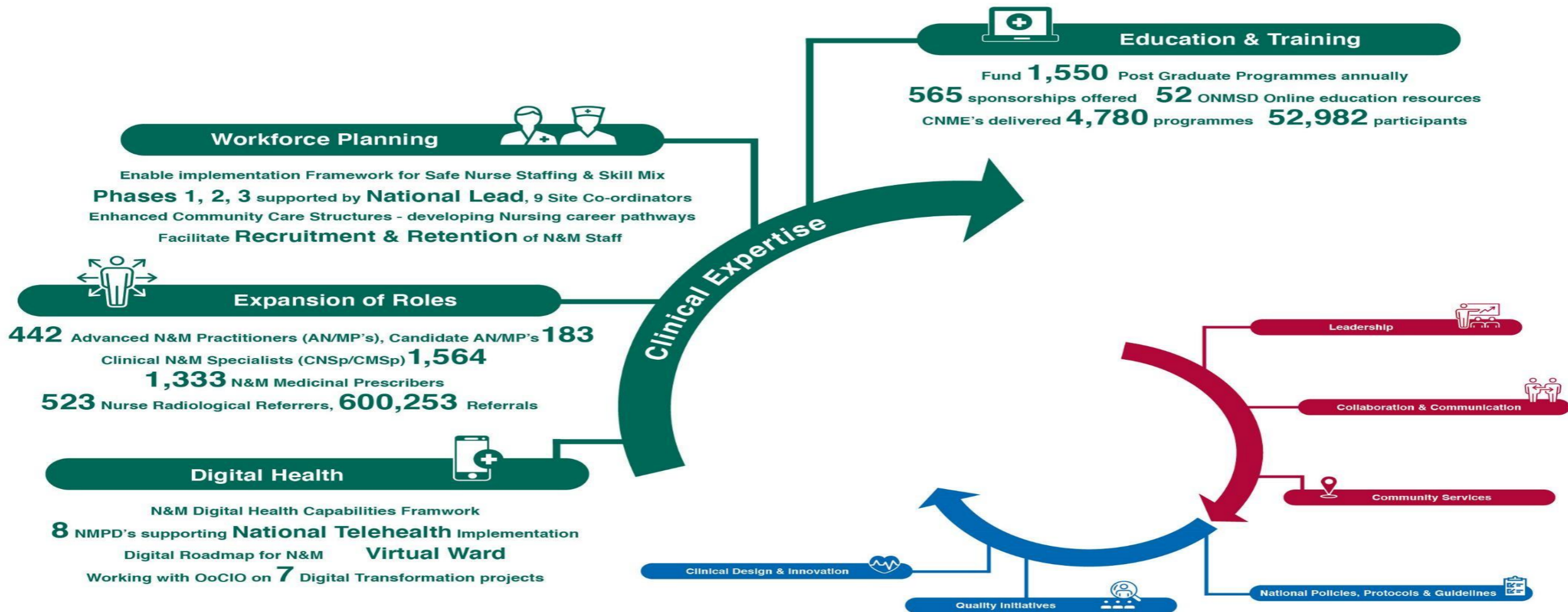
# WHAT WE DO



- Acute Services
- Community / Primary Care
- Children's Services
- Intellectual Disability Services
- Mental Health Services
- Midwifery Services

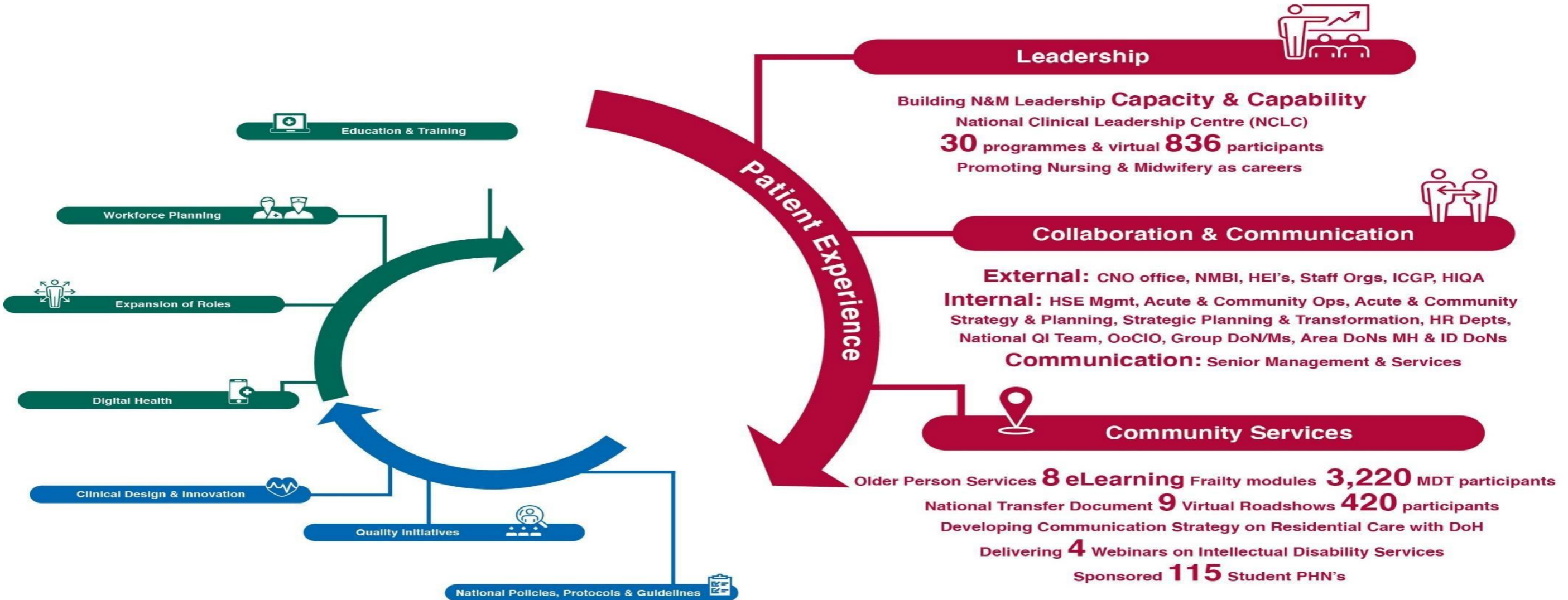


# WHAT WE DO



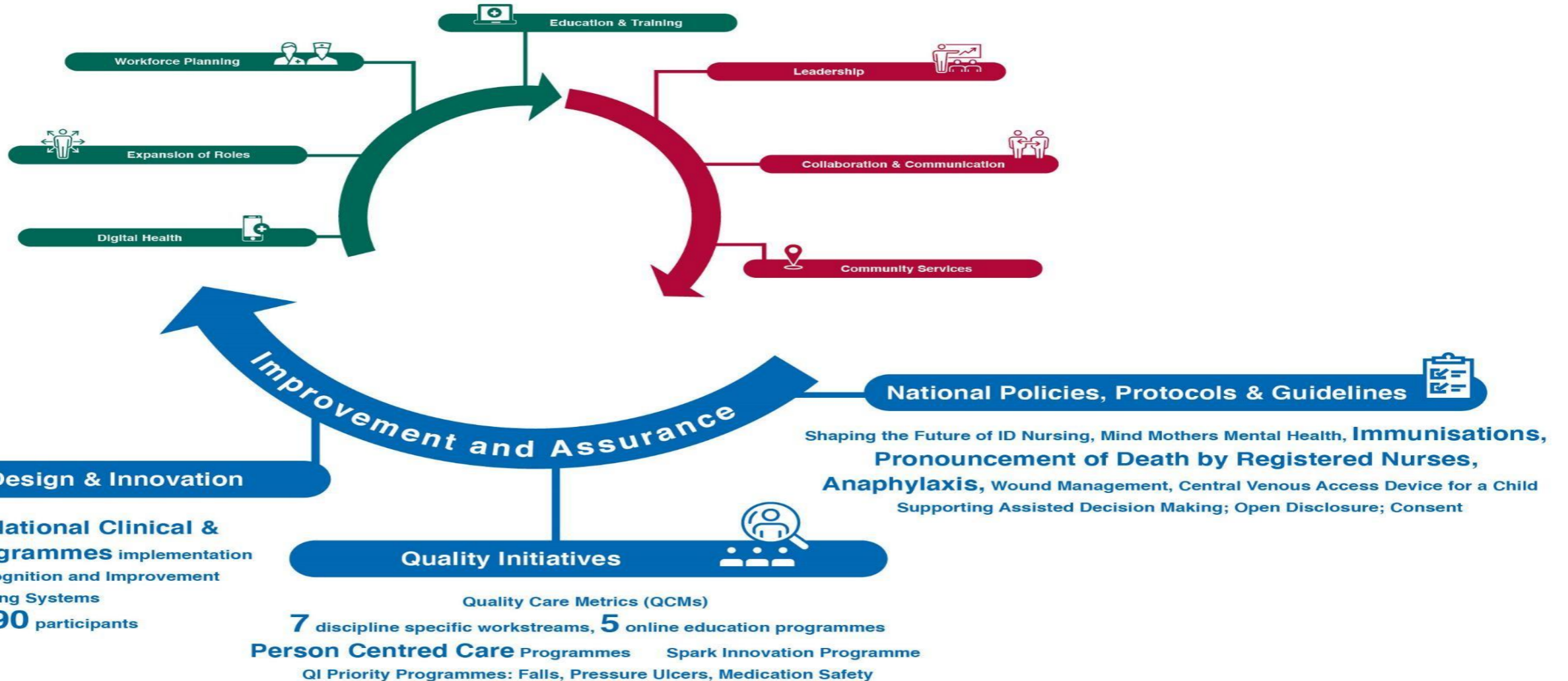


# WHAT WE DO

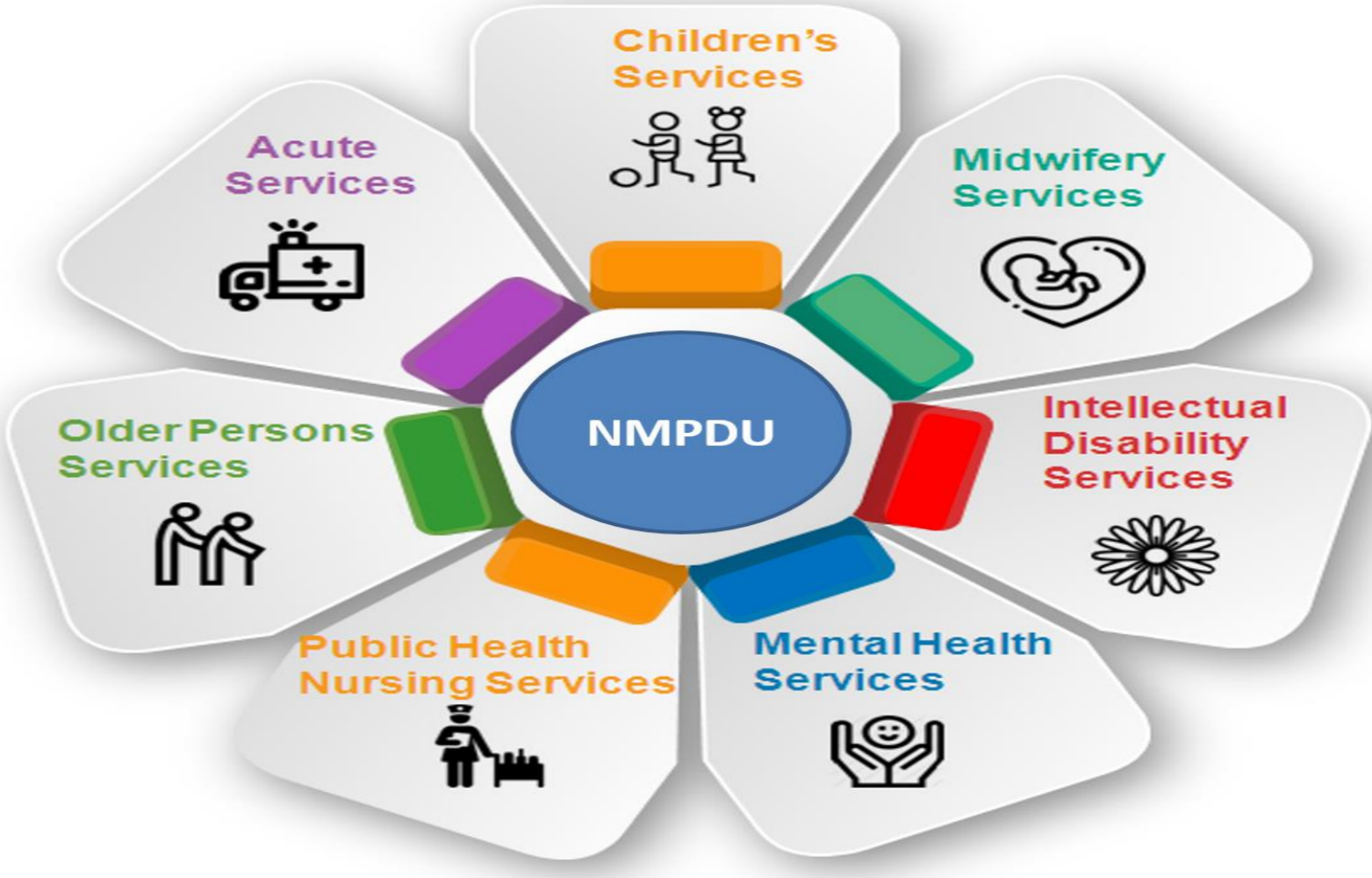




# WHAT WE DO



# Collaboration across all areas of Nursing & Midwifery



# Aileen O'Brien

- Nurse Lead, National Clinical Programme for Anaesthesia

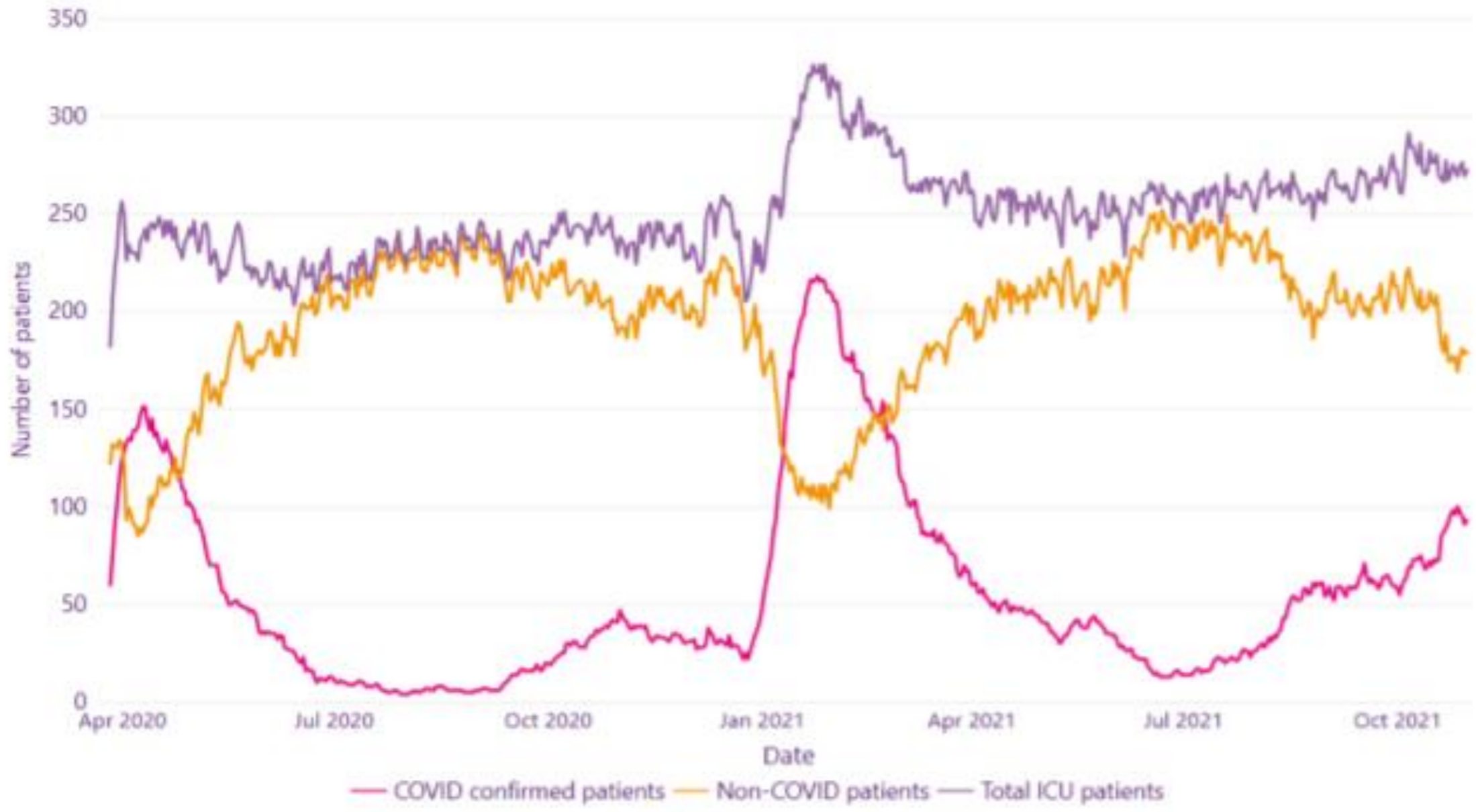


# National Clinical Programme for Anaesthesia











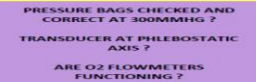
# Derek Cribbin

- National Nurse Lead with the National Clinical Programme for Critical Care



## EMERGENCY CHECKS

Aim : Performed by nurse at bed space to ensure patient safety on each duty

 BVM	 C - CIRCUIT	 BOUGIE & SOFT SUCTION CATHETERS
 WORKING SUCTION UNIT (INCLUDING YANKEUR SUCTION)	 100% NON REBREATHE MASK	 OPA (SIZE 2 / 3 / 4)
 INFUSIONS CHECKED ? HAVE YOU IDENTIFIED WHERE INFUSIONS ARE CONNECTED TO ? ARE THEY CORRECT ? IF NOT NOTIFY CNM IMMEDIATELY	 MONITOR ALARMS CHECKED ? DO THESE NEED TO BE CHANGED BASED ON PATIENT NEEDS ?	 PRESSURE BAGS CHECKED AND CORRECT AT 300MMHG ? TRANSDUCER AT PNEUMOSTATIC AXIS ? ARE O2 FLOWMETERS FUNCTIONING ?

### SPECIFIC EMERGENCY EQUIPMENT

 TRACHEOSTOMY * TRACHY - SAME SIZE & ONE SIZE SMALLER * TRACHY DILATOR (ENSURE VISIBLE)	 CHEST DRAIN * ARE CHEST DRAINS POSITIONED SAFELY ? * CHEST DRAIN CLAMP (1 FOR EACH DRAIN)
---	---



## CRITICAL CARE

National Clinical Programme for Critical Care

COVID-19: Principles & Guidance

Supporting the role of Critical Care Nurses in response to an immediate surge in Critical Care capacity and increased requirements of the Critically Ill patient during the pandemic.

This document is meant only as a guide for safe and optimal staffing requirements and the delivery of nursing care for the critically ill patient during the Covid-19 pandemic of 2020/ 2021 and is not a reflection of normal operational Critical Care Guidelines for Safe Critical Care Workforce requirements

January 2021



### When communicating with families over the phone

#### Do

- \* Provide reassurance patients are getting the care they need
- \* Give families time to ask questions
- \* Provide a short & accurate update, if you're unsure or busy, phone them back
- \* Aim to have weekly family meetings (at a minimum), this maybe over the phone/facetime
- \* Discuss improvements with caution. State that patients are still critically unwell and that conditions can change very quickly. Terms such as reducing blood pressure medication and reducing the Ventilator / Oxygen requirements may help with this.
- \* Encourage families to send in pictures , Music (CDs / Digital Devices) etc.

#### Do not

- \* Give unrealistic goals or targets
- \* Give personal opinions or if family discuss what they see in the media do not engage
- \* Discuss specific clinical numbers such as PEEP / Heart rate / Rhythm
- \* Say "patients have improved" or they are "comfortable" as a blanket statement. Give relevance to the improvement otherwise it can be misleading to families
- \* Leave family with unanswered questions ,if you don't know the answer tell them you will ring them back when you do or get a colleague to intervene if you need



## Critical Care Orientation Manual for Nurses Supporting Extraordinary Surge Capacity in the ICU



This eLearning learning resource does not replace postgraduate Critical Care education.

This Orientation Manual belongs to: \_\_\_\_\_



Seirbhís Sláinte  
Níos Fearr  
á Forbairt

Building a  
Better Health  
Service

# Critical Care Nurse Career Pathway



Pre-Reg Nurse

Staff Nurse

Experienced Nurse  
Entry Point

Staff Nurse

Staff Nurse

Staff Nurse/  
Clinical Nurse  
Specialist/ Clinical  
Nurse Manager/  
Clinical Facilitator/  
Clinical  
Coordinator/  
Clinical Educator

Advanced  
Practice  
Roles

Pre Reg  
Critical Care  
Placement  
for  
identified  
Critical Care  
Pathway  
Candidates

Graduate  
Nurse  
Direct HG  
staff  
recruitment,  
employment  
and Trainee  
Enrolment

Critical Care  
Staff Nurse.  
Orientation  
under  
supervision  
Length of  
time as per  
Unit/ S/N  
requirements

Foundation  
Course  
HG Critical  
Care  
Nursing  
Education  
and  
Training  
**Level 8**

Local  
Certification  
of  
Consolidation  
of  
Competence  
in Critical  
Care Nursing.

Postgraduate  
Critical Care  
Nursing  
Education  
and Training  
**Level 9**

Advancing  
Practice in  
Critical  
Care  
Nursing  
**Level 9**

# Fiona McDaid

- Nurse Lead, National Emergency Medicine Programme,

# Emergency Department COVID-19 Streaming Process

Temporary Structure or Other

1. ED Pre-Triage Arrival Area with Rapid Assessment & Streaming  
(Mini-registration where appropriate see [guidelines](#)) Mini registration [record](#)

HSPC:  
Follow PPE  
Guidance

2. STREAMING to COVID-19 Related ED Treatment Streams

2. STREAMING to Non-COVID-19 related ED Treatment Streams

In considering [escalation of care](#), the following should be considered:

- Pre – existing conditions
  - Current Treatment Goals
  - Advance Care Wishes
  - Humanitarian Intervention
  - [Ethical Considerations](#)
- See useful links on page 2

[Isolation Room Structures](#)

- [Coroner Advice](#)
- [Guidance for funeral directors](#)

[Patient Leaflets](#)

?COVID-19  
Emergency requiring resuscitation

[IAEM Guidance](#)

[Adult Resuscitation Plan](#)

[Paediatrics Resuscitation Plan](#)

[Respiratory Management](#) or  
Guidance by Local & National Protocol

?COVID-19  
Requiring admission, but not resuscitation

[Adult/Paediatric Care Plan](#)

[Therapeutic guideline for COVID-19](#)

[Example of Good Pathways of Care](#)

Transfer to Appropriate Ward

?COVID-19

Suitable for home or other care facility.

See [Criteria for patients who maybe suitable for home care](#) & Self Care plan

ED Triage Check-in

[Agreed Care Pathways](#) consistent with Pandemic response

To Appropriate Specialty Ward

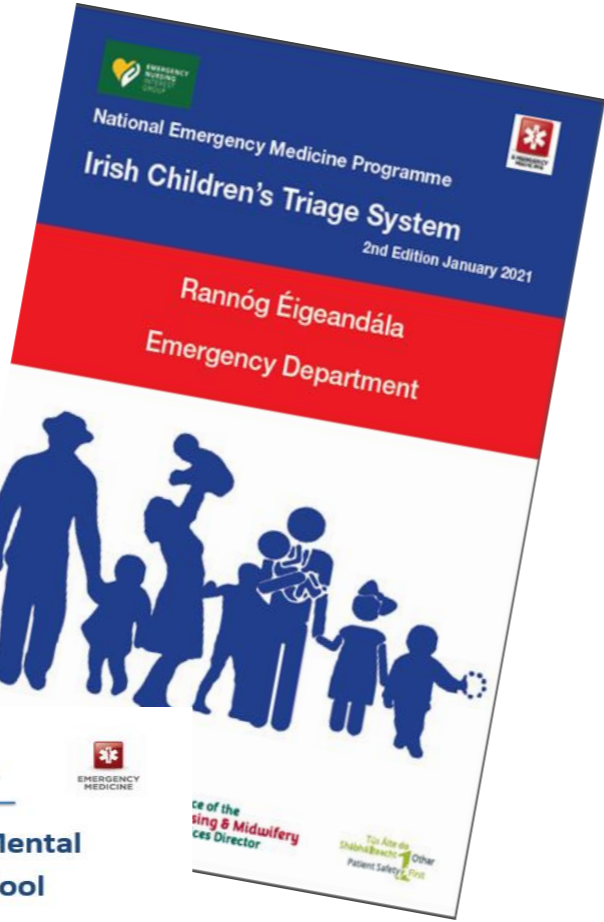
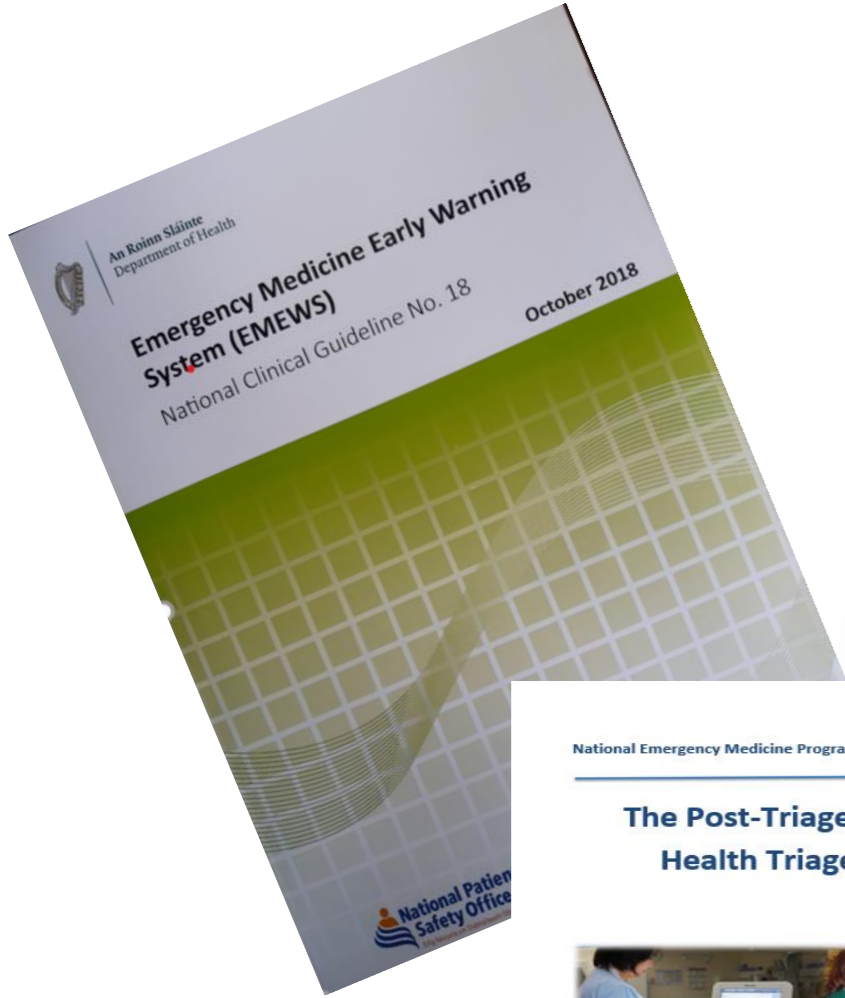
Home

Supports for Emergency Medicine Staff: [Wellbeing](#), [Mental Health](#), [Self Care](#)





EMERGENCY MEDICINE



National Emergency Medicine Programme

### The Post-Triage Mental Health Triage Tool



A manual to assist Emergency Department Triage Nurse Education

**Celebrating 30 years of Emergency Nursing Education in Ireland**

Date 15<sup>th</sup> of October at 2pm  
NMBI Category 1 approved for 2 CEUs  
A recording of the event will be made available  
Contact [emp@rcsi.ie](mailto:emp@rcsi.ie)

**Please Click [HERE](#) to Register for the Webinar**

Time	Presentation	Presenter
14.00hrs	Opening	Mr Paul Reid, Director General HSE
14.15hrs	Chair Session 1	Ms Joan Donegan - Education Lead, Office of the Nursing and Midwifery Services Director
14.40hrs	Panel 1: The development of specialist Emergency Nurse Education in Ireland - 1970 to date	Ms Suzanne Dempsey - Deputy CEO / Don Mater Misericordiae University Hospital Ms Sheila Wall - Retired emergency nurse Ms Valerie Small - 1 <sup>st</sup> Registered Advanced Nurse Practitioner in Ireland Dr Patrick Cotter - Lecturer UCC
14.55hrs	Chair session 2	Dr Gerry McCarthy - EMP Clinical Lead Ms Fiona McDaid - Executive Director Dr R...
15.15hrs	Panel 2: The Future of Emergency Nursing	
15.30hrs		
15.50hrs		

**Emergency Department Activity & Profile**

**EMERGENCY DEPARTMENT ACTIVITY & PROFILE TOOL**

**USER MANUAL**

DATE: May 2018  
Version: 1.1

**ICD-10 Coding for ED patients**

15 June 2022 / Activity Based Funding / 14:30-16:00

**CHAIR:**  
Dr Gerry McCarthy - National Clinical Lead, National Clinical Programme in Emergency Medicine

**PANEL:**  
Dr Gerry McCarthy - Emergency Medicine Clinical Lead  
Vian Donovan - National Finance Division HSE, Healthcare Pricing Office (HPO)  
M MacMahon - Aspire Fellow Informatics  
Nolley - National IPMS Acute Operations Lead  
Bogher - Senior Statistician National Finance Division  
y - Emergency Medicine Clinical Lead

**Panel 1: The development of specialist Emergency Nurse Education in Ireland - 1970 to date**

**Panel 2: The Future of Emergency Nursing**

**How coding can be done efficiently through IPMS**

**Roll out Plan on Costing**

**Support for ABF**

**ABF**

**Costing**

**Pricing**

**Data Collection**

**RCSI**





Mural in Harold's Cross Dublin, 2020

Deirdre Lang

Director of Nursing/National Lead Older Persons Services, Clinical & Integrated Programmes

# COVID-19 Nursing Homes Expert Panel

## Examination of Measures to 2021

Report to the Minister for Health

National Taskforce on Safer Staffing in RCF

Roles & responsibilities of Person in Charge

Clinical Governance RCF

Training needs analysis RCF

Infection Prevention Control education and process review

Resident Safety Outcome Metrics

Supporting COVID Response Teams

Pronouncement of death interim policy

Protocols on end of life, oxygen, IPC

Moving education on line and access to all services

Communications and Whats-app group  
– 528 participants

Webinars to support ongoing/continuous changes to practice

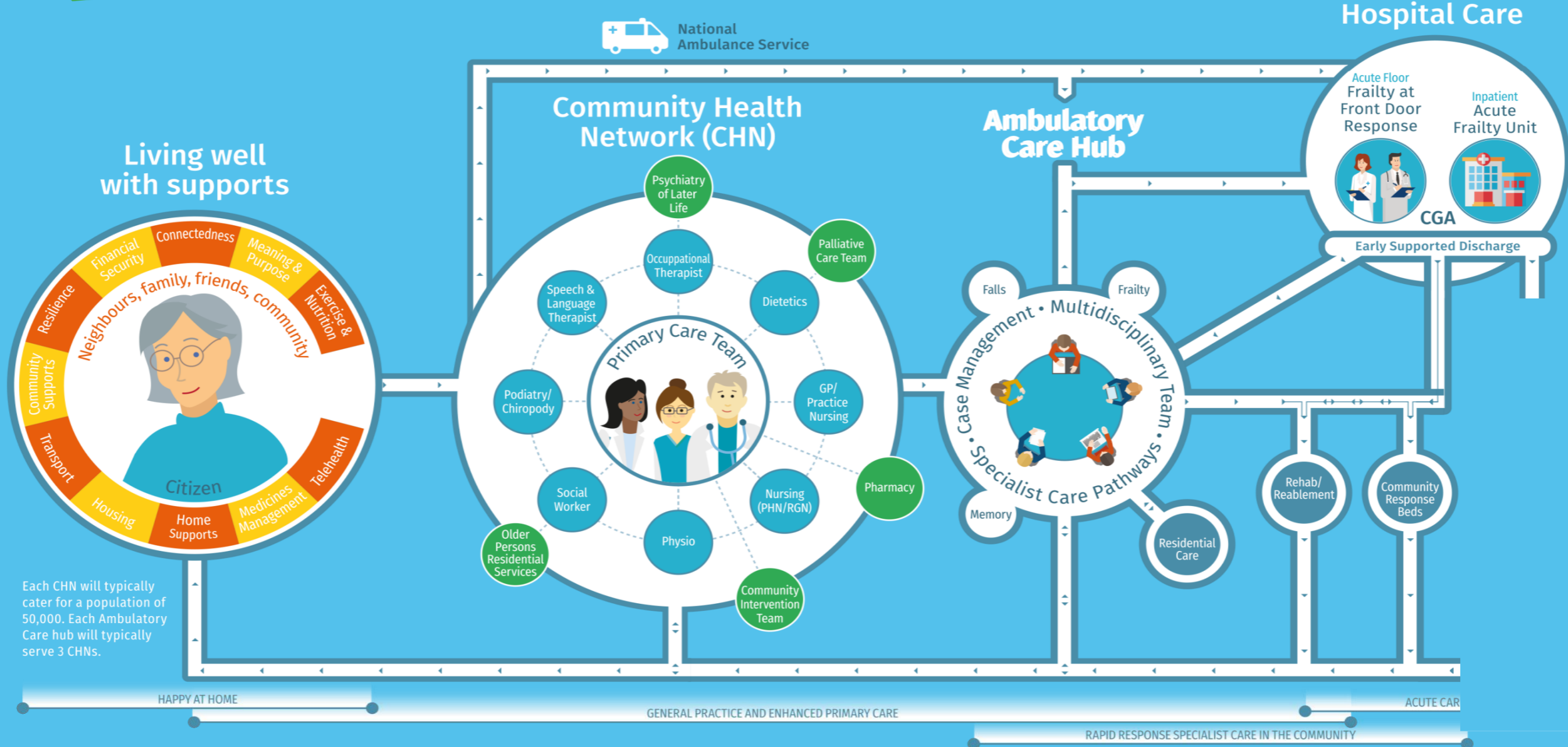
Telehealth

# Older Persons Service Model



Shift Left of Resources & Activity

Least Intensive Setting / Care / Interventions



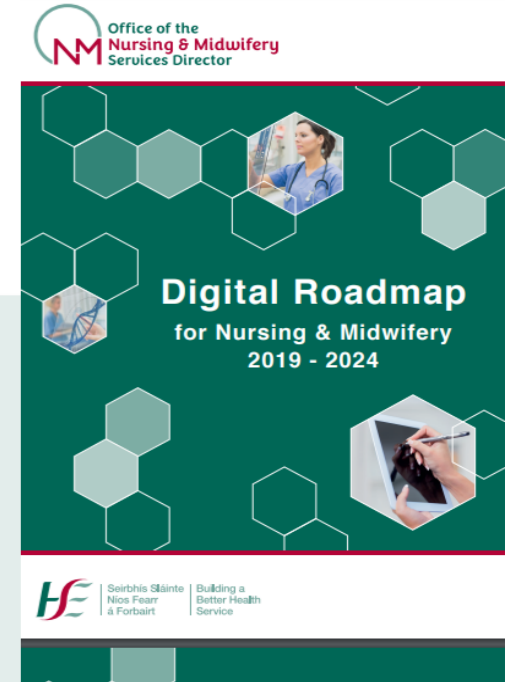
Each CHN will typically cater for a population of 50,000. Each Ambulatory Care hub will typically serve 3 CHNs.

Loretto Grogan

Director of Nursing | National Clinical Information Officer – Nursing and Midwifery

# Strategy and policy

- Expert Review Body on Nursing and Midwifery
- National CNIO role
- New roles
  - Nursing and Midwifery Information Officers
  - Community role
  - Model 4's CNIO
  - Innovation posts
- Significant programmes of work planned for Acute and Community
- Department of Health eHealth Strategy refresh
  - Input on foundations first
- New Chief Technology Transformation Officer
- Updated Digital Health HSE Strategy



A green rectangular sign with rounded corners and a white border, mounted on a metal pole. The sign features the words "Thank You" in a white, sans-serif font. The background of the sign is a textured green. The sign is set against a bright blue sky with scattered white clouds.

Thank You